

CLERK'S RECORDING CERTIFICATE

I, MARSHA STILLER, CLERK OF THE CIRCUIT COURT OF MARTIN COUNTY, FLORIDA, HEREBY CERTIFY THAT THIS PLAT WAS FILED FOR RECORD IN

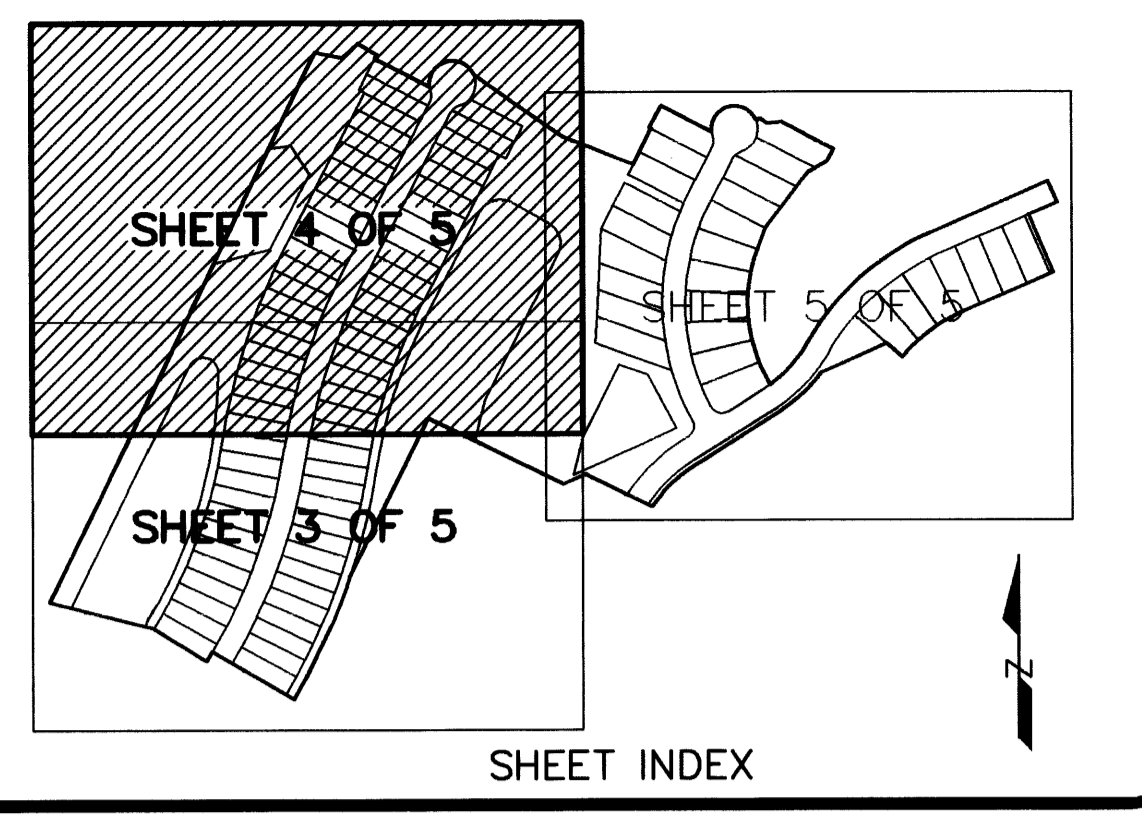
PLAT BOOK 14, PAGE 42, MARTIN COUNTY, FLORIDA, PUBLIC RECORDS THIS 20th DAY OF January, 1997

MARSHA STILLER, CLERK OF THE CIRCUIT COURT MARTIN COUNTY, FLORIDA.

FILE NUMBER 1274247 BY Charlotte Burkley DEPUTY CLERK

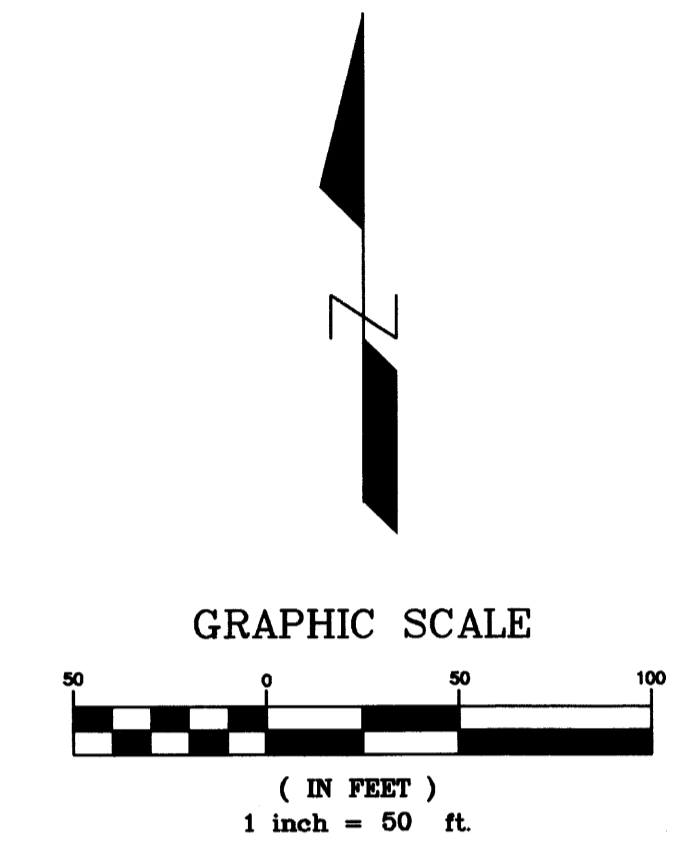
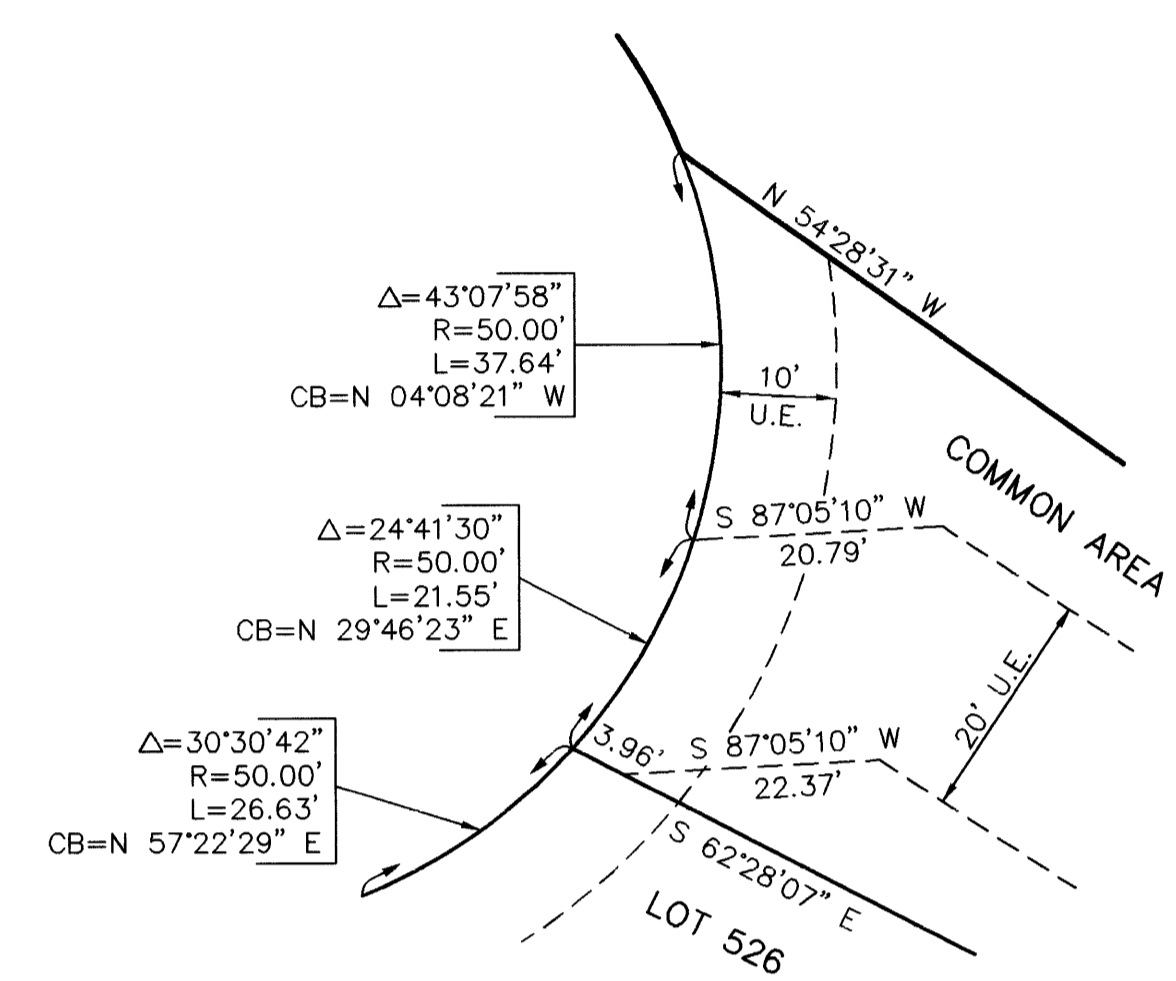
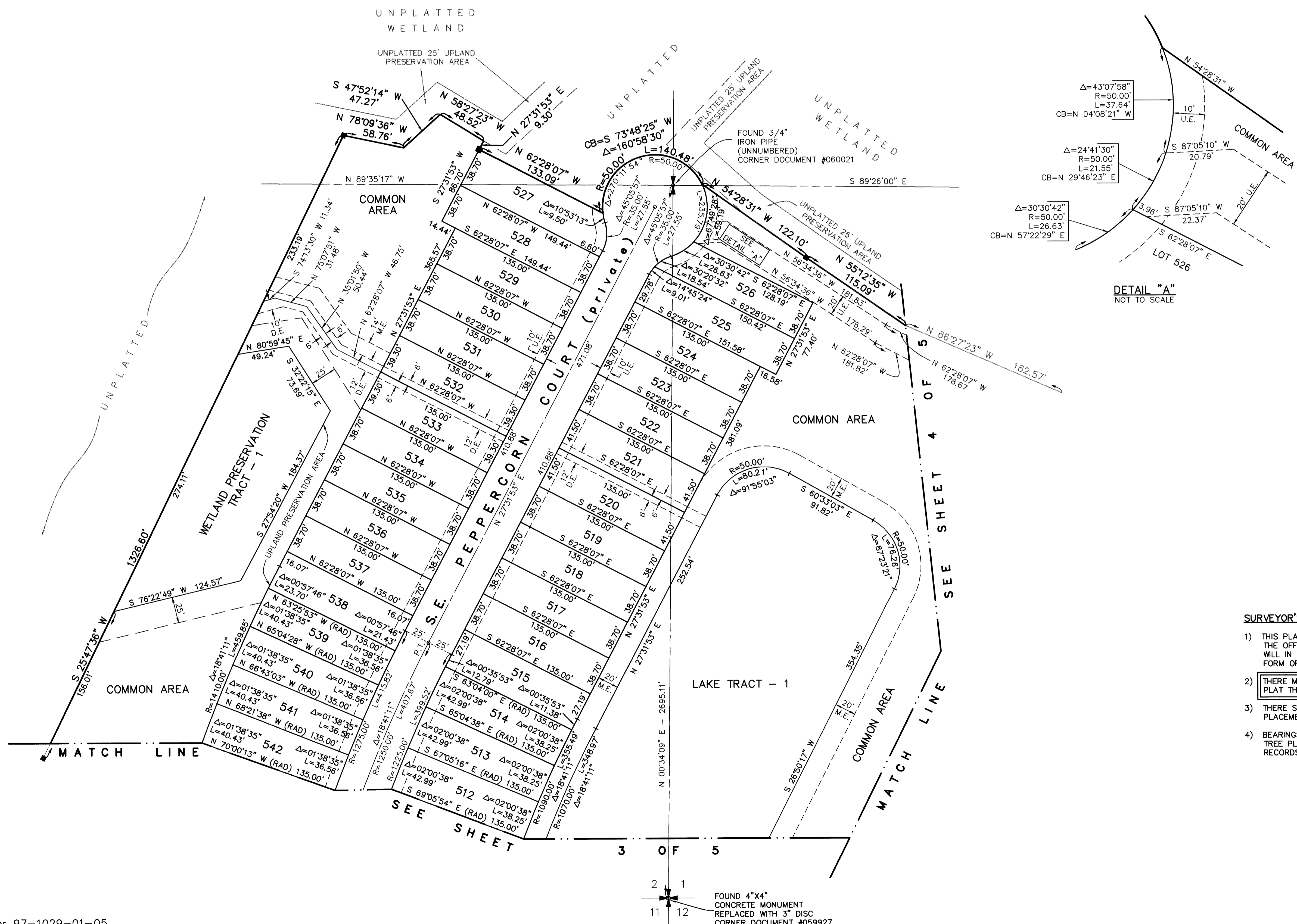
1-39-41-001-000-0000-0

SUBDIVISION PARCEL CONTROL NO.



DOUBLE TREE PLAT NO. 7, A P.U.D. (r)

"A PLAT OF PHASE IIIB"
BEING A PORTION OF LAND LYING IN SECTIONS 1 AND 2,
TOWNSHIP 39 SOUTH, RANGE 41 EAST
MARTIN COUNTY, FLORIDA



- LEGEND**
- = SET PERMANENT CONTROL POINT (PCP) PARKER KALON NAIL & WASHER LABELED "GCY LB 4108"
 - = FOUND PERMANENT REFERENCE MONUMENT (PRM) 4"x4" CONCRETE MONUMENT WITH DISK LABELED "GCY INC. P.R.M. LB 4108, PSM 4130"
 - = SET PERMANENT REFERENCE MONUMENT (PRM) 4"x4" CONCRETE MONUMENT WITH DISK LABELED "GCY INC. P.R.M. LB 4108, PSM 4130"
 - ✦ = SECTION CORNER
 - ✦ = QUARTER CORNER
 - Δ = DELTA (CENTRAL ANGLE)
 - L = ARC LENGTH
 - R = RADIUS
 - CB = CHORD BEARING
 - D.E. = DRAINAGE EASEMENT
 - LB = LICENSED BUSINESS
 - M.E. = MAINTENANCE EASEMENT
 - P.C. = POINT OF CURVATURE
 - P.R.C. = POINT OF REVERSE CURVATURE
 - PSM = PROFESSIONAL SURVEYOR AND MAPPER
 - P.T. = POINT OF TANGENCY
 - P.U.D. = PLANNED UNIT DEVELOPMENT
 - RAD. = RADIAL LINE
 - U.E. = UTILITY EASEMENT

- SURVEYOR'S NOTES**
- THIS PLAT, AS RECORDED IN ITS ORIGINAL FORM IN THE PUBLIC RECORDS, IS THE OFFICIAL DEPICTION OF THE SUBDIVIDED LANDS DESCRIBED HEREON AND WILL IN NO CIRCUMSTANCES BE SUPPLANTED IN AUTHORITY BY ANY OTHER FORM OF THE PLAT, WHETHER GRAPHIC OR DIGITAL.
 - THERE MAY BE ADDITIONAL RESTRICTIONS THAT ARE NOT RECORDED ON THIS PLAT THAT MAY BE FOUND IN THE PUBLIC RECORDS OF THIS COUNTY.
 - THERE SHALL BE NO BUILDING OR ANY OTHER KIND OF CONSTRUCTION, OR PLACEMENT OF TREES OR SHRUBS ON DRAINAGE EASEMENTS.
 - BEARINGS SHOWN HEREON ARE REFERENCED TO THE NORTH LINE OF "DOUBLE TREE PLAT NO. 6, A P.U.D.", AS RECORDED IN PLAT BOOK 14, PAGE 19, PUBLIC RECORDS, MARTIN COUNTY, FLORIDA. SAID LINE BEARS SOUTH 63°47'54" EAST.

GCY
INCORPORATED
PROFESSIONAL SURVEYORS AND MAPPERS
1505 S.W. MARTIN HIGHWAY P.O. BOX 1469
PALM CITY, FLORIDA 34991 (561-286-8083)
CERTIFICATE OF AUTHORIZATION LB 4108